

ARCHITEK ASSURED GREEN ROOFS gentle slope

Sloped green roofs are extremely attractive and highly visible from the ground, however they have unique challenges and need to deal with erosion and shear forces due to gravity. The soil or grow media/substrate layer is usually 100mm to 200mm: 4-6" and the entire system has a saturated weight of less than 35 lbs. per square ft. - average being about 50 lbs. per square foot.



DIADRAIN-40H

KEY FEATURES:

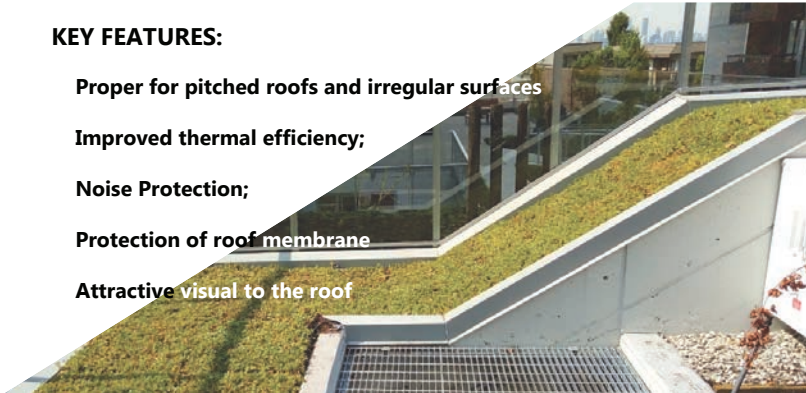
Proper for pitched roofs and irregular surfaces

Improved thermal efficiency;

Noise Protection;

Protection of roof membrane

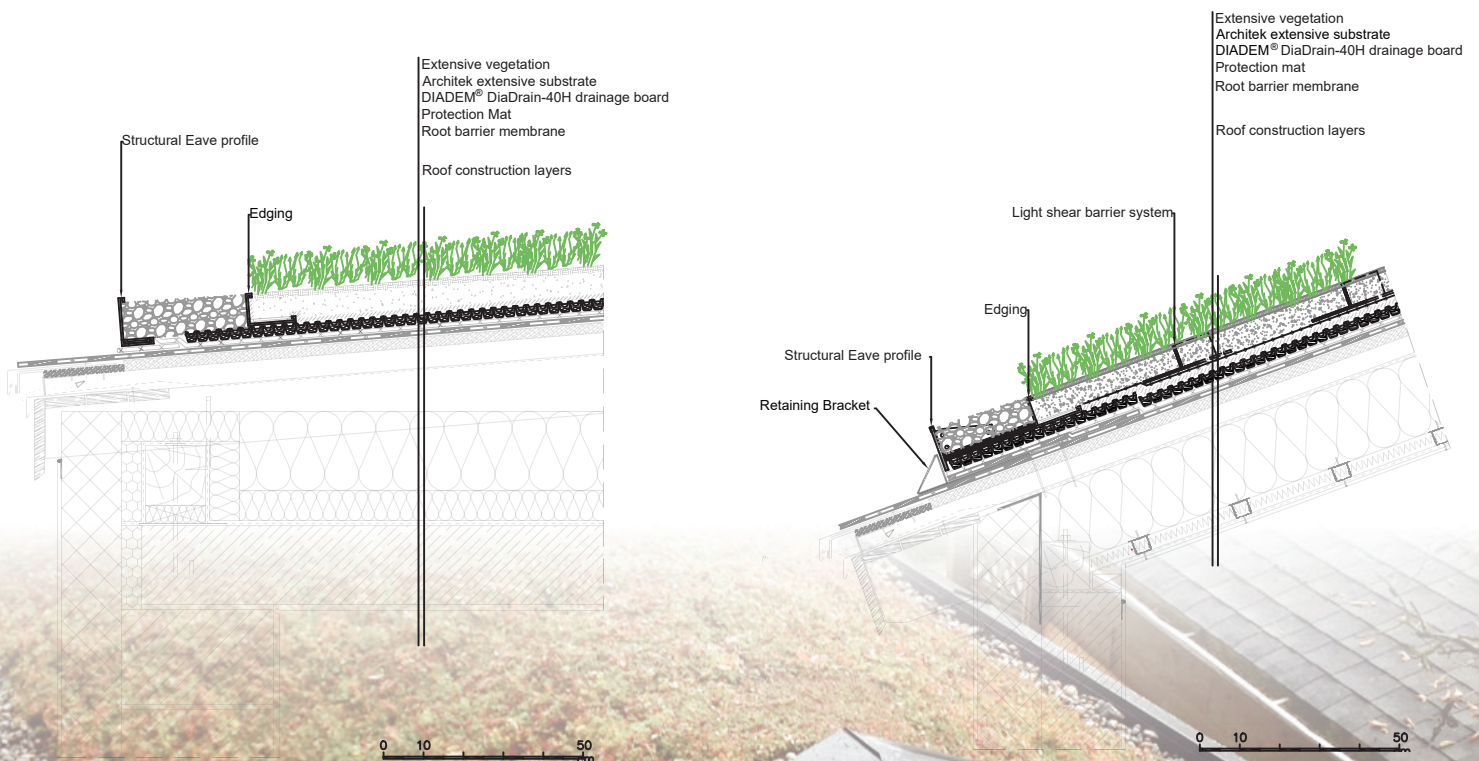
Attractive visual to the roof



ONE SIXTY MULTI-RESIDENTIAL - NORTH VANCOUVER BC



VANDUSEN BOTANICAL GARDEN - VANCOUVER BC



| | |
|-----------------------------|--|
| Thickness of system (inch): | 12.0" |
| Dry Weight (lbs/sqf): | 27.57 |
| Saturated Weight (lbs/sqf): | 46.40 |
| Vegetation (types): | Mix of Sedums / Plugs / Perennials (flowers and herbs) |
| Roof Slope (Degrees): | up to 25* |

COMPONENTS:



Special plants for semi intensive green roofs. Sedums, plugs and perennials. Sedum size: 12" x 24" (different mixes). A coconut fiber base assures effective rooting of plants to the underlying growth medium and holds the tile together for easy installation.



Architek Semi-Intensive Mix. The proper blend of organic matter and aggregates to an FLL standard. The growing media ensures the nutrients needed for the growth of plants, serves as a support to the roots, thus providing the ground of the growth of the vegetation. It includes mostly minerals, mixtures with proper air content, and durable good water permeability and stable structure.

Available in bags and bulks.



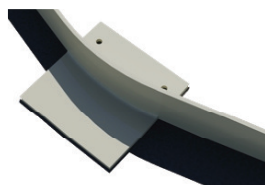
DiaDrain-40H Drainage Board. Made of recycled high-impact polystyrene, 40 mm high, stepped barrier form, with recessed evaporation vents and water channel system on the underside.

| | |
|--|---|
| Board size (mm): | approx. 2040×1040×40 [ca. 2,12 m ² /sheet] |
| Rainwater retention capacity (l/sqm) | 19,59 |
| Water flow capacity EN ISO 12958 (l/(m×s)) | at 1%: 0,70 • at 2%: 1,01 • at 3%: 1,25 • at 5%: 1,63 |



Flexible and Rigid Edging. Made from 100% recycled post-consumer PVC or recycled aluminum both are 100% recyclable. Drainage slots and multi-purpose stake hole are also optional. PVC version has a UV inhibitor to increase strength and resistance to ultraviolet radiation.

| | |
|---------------------------------|--|
| Black PVC: | Heights and Widths up to 6" and as low as 3" |
| Alumium (Mill or Black finish): | Available in 8 ft sections from 3"x3" to 8.5"x7.5" |



Light Shear Barrier system. When necessary and depending on the roof slope, shear barrier may be used to transfer this load to the roof construction. Built-in or Stainless Steel profiles can be used in depending on the roof construction type (wood, concrete etc).



Protection Mat. This product protects the roof insulation boards against damage during the installation and future maintenance work serving as a protecting layer.



Root Barrier. Root resistant and vapour control layer made of 20-40 mm thick elastic polyethylene regenerate. Applicable as a vapour control layer and can be used as a root resistant layer on green roofs when lied down with a 1.0 m overlapping. Dimensions: 4×25 m (W×L); Roll width: 1 m; wrapping: 100 m²/roll; colour: black.

